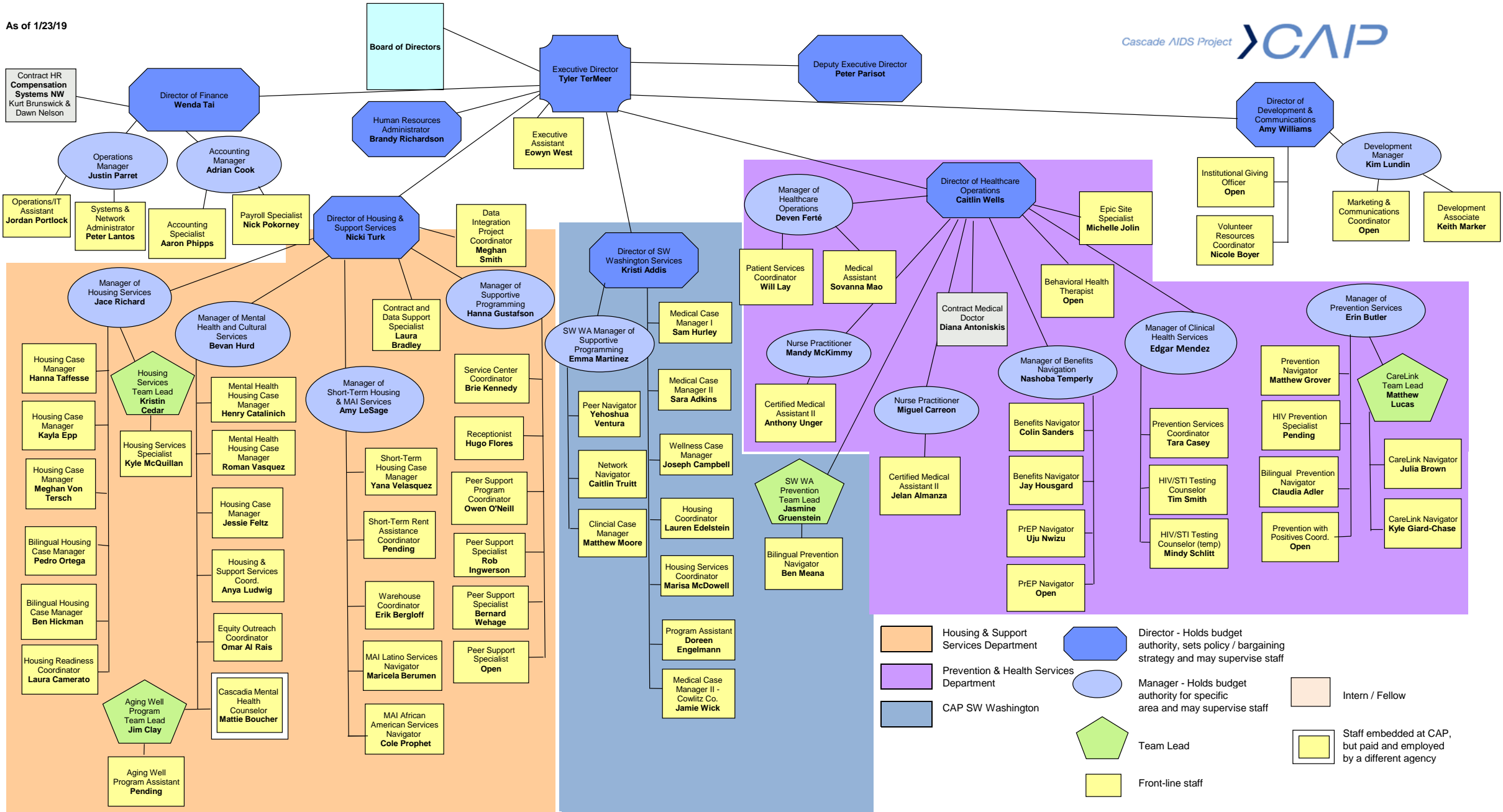


As of 1/23/19



	Housing & Support Services Department		Director - Holds budget authority, sets policy / bargaining strategy and may supervise staff		Intern / Fellow
	Prevention & Health Services Department		Manager - Holds budget authority for specific area and may supervise staff		Staff embedded at CAP, but paid and employed by a different agency
	CAP SW Washington		Team Lead		Front-line staff